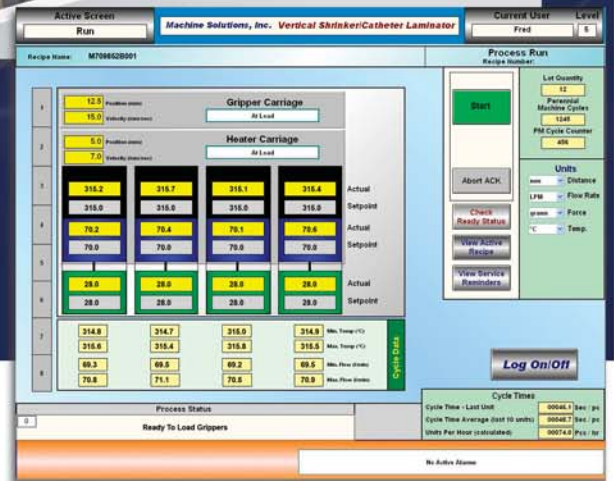


VS1100

Vertical Shrinker Equipment



The MSI VS1100 Vertical Shrinker is PLC controlled to apply precise heat around the circumference and along the length of catheters resulting in consistent, highly repeatable laminations. The proprietary Microswirl 360° thermal nozzle provides superior uniform heating characteristics and minimizes the incidence of hot or cold spots during the shrinking process.

Process parameters are controlled by and stored within the PLC, thereby eliminating manual setup processes when changing between products. Additional optional automation features include bar code scanning, automated product gripper rack that traverses down to a user-defined load height, and a product tensioning system programmed to achieve and maintain a set amount of tension on the product. The equipment also has data acquisition and fault history file capabilities.

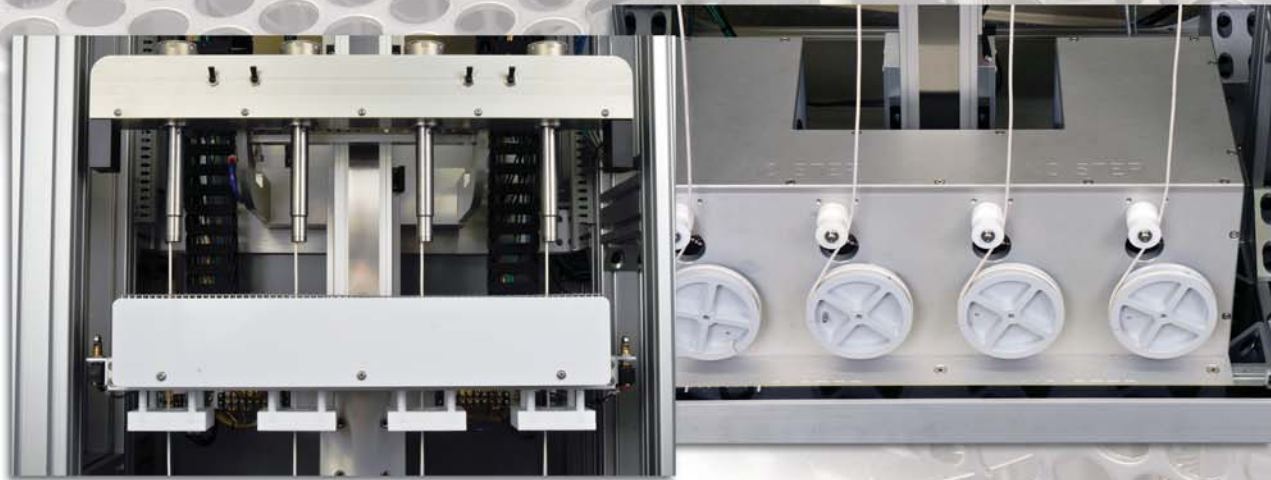
VS1100 Features

- PLC control and storage of all process parameters.
- Uniform application of thermal energy.
- Automated gripper loading assembly for long product.
- Product tensioning option.
- Bar code scanning, data acquisition and networking capabilities.



VS1100

Vertical Shrinker Equipment



Summary of Spec Data

<i>Temp Range</i>	Ambient to 750°F (399°C)
<i>Accuracy</i>	±5°F (2.78°C)
<i>Air Flow Range</i>	30 to 200SCFH
<i>Compressed Air Requirement</i>	100 psi at 15cf/min (Filtered Oil Free)
<i>Power Requirement</i>	20A, Single Phase, 60Hz, 240VAC.
<i>Product Length</i>	69 in (175cm), custom lengths available
<i>Heater Traverse Speed</i>	0-3.9 in/sec (0-100mm/sec)
<i>Single Run Product Capacity</i>	1 – 4
<i>General Warranty</i>	1 Year

Machine Dimensions

- Shipping Weight: 1050 lbs (476kg)
- Machine Weight: 800 lbs (363kg)
- Height: 90" (2286mm)
- Width: 48" (1219mm)
- Depth: 36" (914mm)

VS1100 Equipment Specifications

- Four (4) Microswirl 360° thermal nozzles.
- Porous metal technology nozzle design produces even temperature distribution around the ID circumference.
- Independent temperature and flow controls for each nozzle.
- Adjustable product gripper loading height (manual or automated).
- CE Marked.

Automated Gripper Loading Assembly (Optional):

- Electronic controlled translating loading rack.
- Loading height and home position height set in password protected profile screen.
- Catheter holding tray mounted to machine base and cradles remaining section of product.

Automated Tensioning System (Optional):

- System applies constant axial tension to distal end of product.
- Amount of tension set in password protected profile screen.
- Stepper motor driven closed-loop product tensioning wheels.

Control System Specifications:

- PLC controlled system with touch screen HMI.
- Software allows multiple traverse speed and distance relationships per profile.
- PLC controlled process parameters: nozzle rate/distance, air flow, temperature, loading height and product tension.
- Data acquisition and fault history file.
- Optional barcode scanning capability.